

In partnership with:

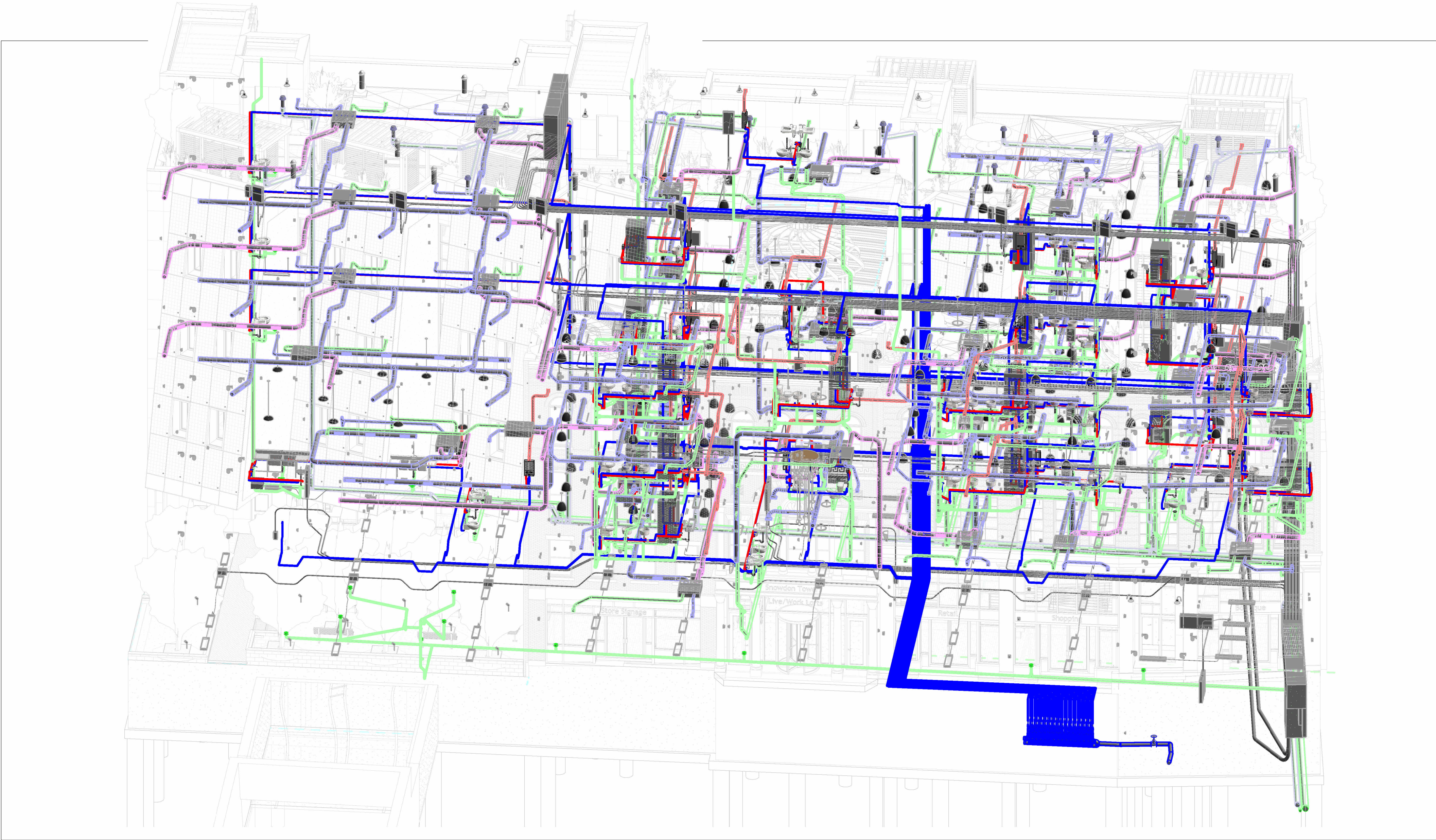


Autodesk

Snowdon Towers

An Autodesk Revit sample project

Brownsville, PA

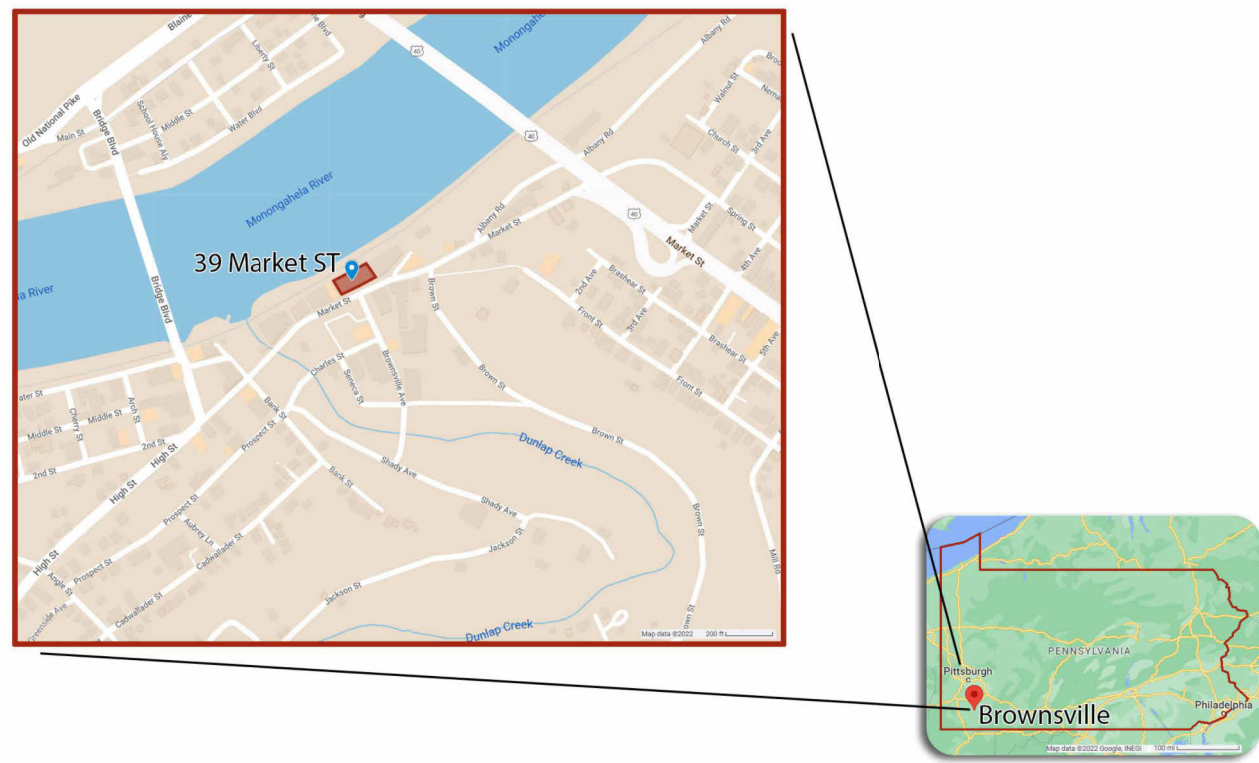


Previously on this site:



Sheet Index	
Sheet Number	Sheet Name
P000	COVER SHEET
P001	Learn about this project
P100	PLAN - L0 SANITARY
P101	PLAN - L1 SANITARY
P102	PLAN - L2 SANITARY
P103	PLAN - L3 SANITARY
P104	PLAN - L4 SANITARY
P105	PLAN - L5 SANITARY
P106	PLAN - ROOF SANITARY
P200	RCP - L0 SANITARY
P201	RCP - L1 SANITARY
P202	RCP - L2 SANITARY
P203	RCP - L3 SANITARY
P204	RCP - L4 SANITARY
P205	RCP - L5 SANITARY
P206	RCP - ROOF SANITARY
P300	SECTIONS SANITARY RISERS
P301	SECTIONS SANITARY RISERS
P302	SECTIONS SANITARY RISERS
P303	SECTIONS SANITARY RISERS
P400	DOMESTIC WATER PLAN - L0 PARKING
P401	DOMESTIC WATER PLAN - L0 PARKING
P402	DOMESTIC WATER PLAN - L0 PARKING
P403	DOMESTIC WATER PLAN - L0 PARKING
P404	DOMESTIC WATER PLAN - L0 PARKING
P405	DOMESTIC WATER PLAN - L0 PARKING
P406	DOMESTIC WATER PLAN - L0 PARKING

Project Location:



How to use this project:

This is the: **Snowdon Towers Sample Plumbing.rvt** model

This project is distributed across several Revit models in keeping with industry standard best practices. If you wish to see the entire project, you can open each model individually or you can link them all together. You will find all models in the same folder.

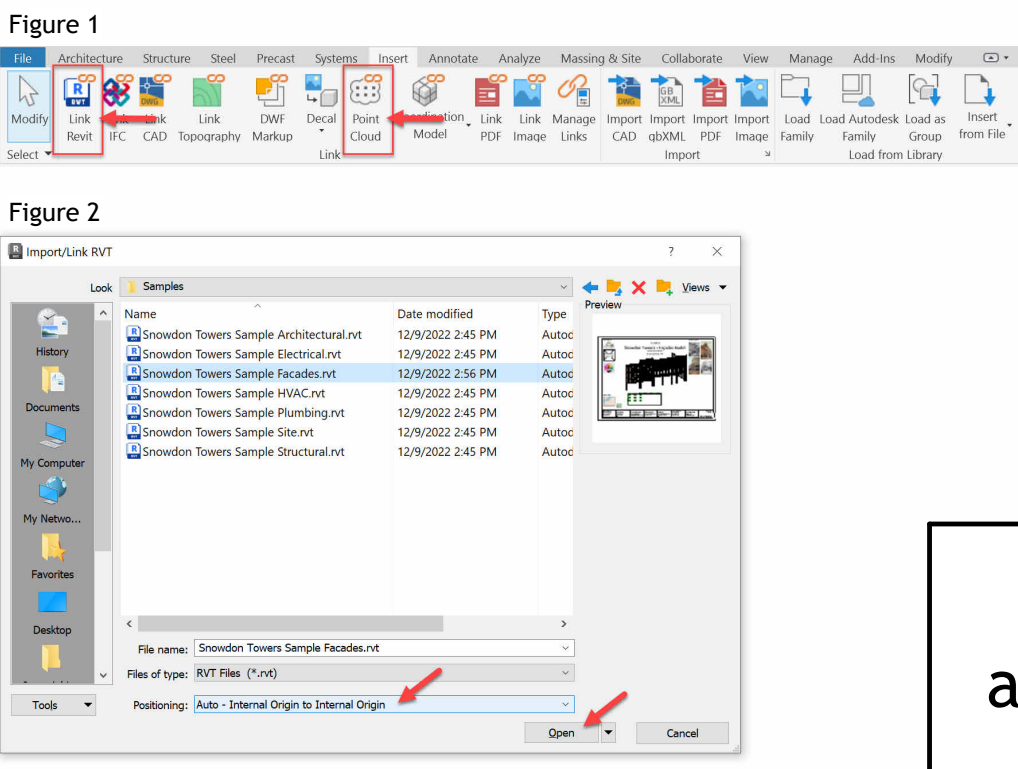
The models included are:
Snowdon Towers Sample Architectural.rvt
Snowdon Towers Sample Site.rvt
Snowdon Towers Sample Facades.rvt
Snowdon Towers Sample Structural.rvt
Snowdon Towers Sample Plumbing.rvt
Snowdon Towers Sample HVAC.rvt
Snowdon Towers Sample Electrical.rvt
Brownsville.rcp (Point Cloud)

All models use the same coordinate system and are stored in the same folder by default. View templates have been saved and applied to views within the models to help ensure that geometry displays correctly both in your host model and any linked models.

To attach a link, do the following:

1. Open a floor plan view, such as: **Floor Plan L1**.
2. Click the **Insert** tab of the ribbon.
3. Click the **Link Revit** (or **Point Cloud**) button. (Figure 1)
4. Select the file that you wish to link.
5. Ensure that **Positioning** is set to: **Auto - Internal Origin to Internal Origin** and then click **Open**. (Figure 2)

(Alternatively, you can choose: **Auto - By Shared Coordinates**. This is optional as all files use the same internal origin.)



To learn more about this project, visit Sheet P001.

NOT FOR CONSTRUCTION

GIS Coordinate System: PA83-SF
40.022371938, -79.88666527

Project Management & Architectural Modeling:

Cartesian Inverse, PA
Chicago, IL 28246

Architectural Design:

Etienne Oiseau, LLC
Detroit, MI 96435

Structural Design and Modeling:

Safe Harbor Engineering, PC
11 Eleventh Street, Suite 11
Purchasing Decisions, NO 13131-1525

MEP Design and Modeling:

Droffats Consulting Services, LLC
Los Angeles, CA 78383

Civil Engineering:

Rubicon Engineering Solutions, INC
Pittsburgh, PA 77462-5247

Landscape Architecture & Community Planning:

Dagny Taggart, LTD
Brownsville, PA 52872

Commercial Kitchen Design:

Designing Trends
103B Broadway
Knoxville, TN 36664-2084

Project Number 7765328-33-P
Date 6/1/2023





www.autodesk.com/revit

Project Management & Architectural Modeling:

Cartesian Inverse, PA
Chicago, IL 28246

Architectural Design:

Etienne Oiseau, LLC
Detroit, MI 96435

Structural Design and Modeling:

Safe Harbor Engineering, PC
11 Eleventh Street, Suite 11
Purchasing Decisions, NO 13131-1525

MEP Design and Modeling:

Droffats Consulting Services, LLC
Los Angeles, CA 78383

Civil Engineering:

Rubicon Engineering Solutions, INC
Pittsburgh, PA 77462-5247

Landscape Architecture & Community Planning:

Dagny Taggart, LTD
Brownsville, PA 52872

Commercial Kitchen Design:

Designing Trends
103B Broadway
Knoxville, TN 36664-2084

[illegible]

Autodesk

Snowdon Towers
PLAN - L0 SANITARY

Project Number	7765328-33-P
----------------	--------------

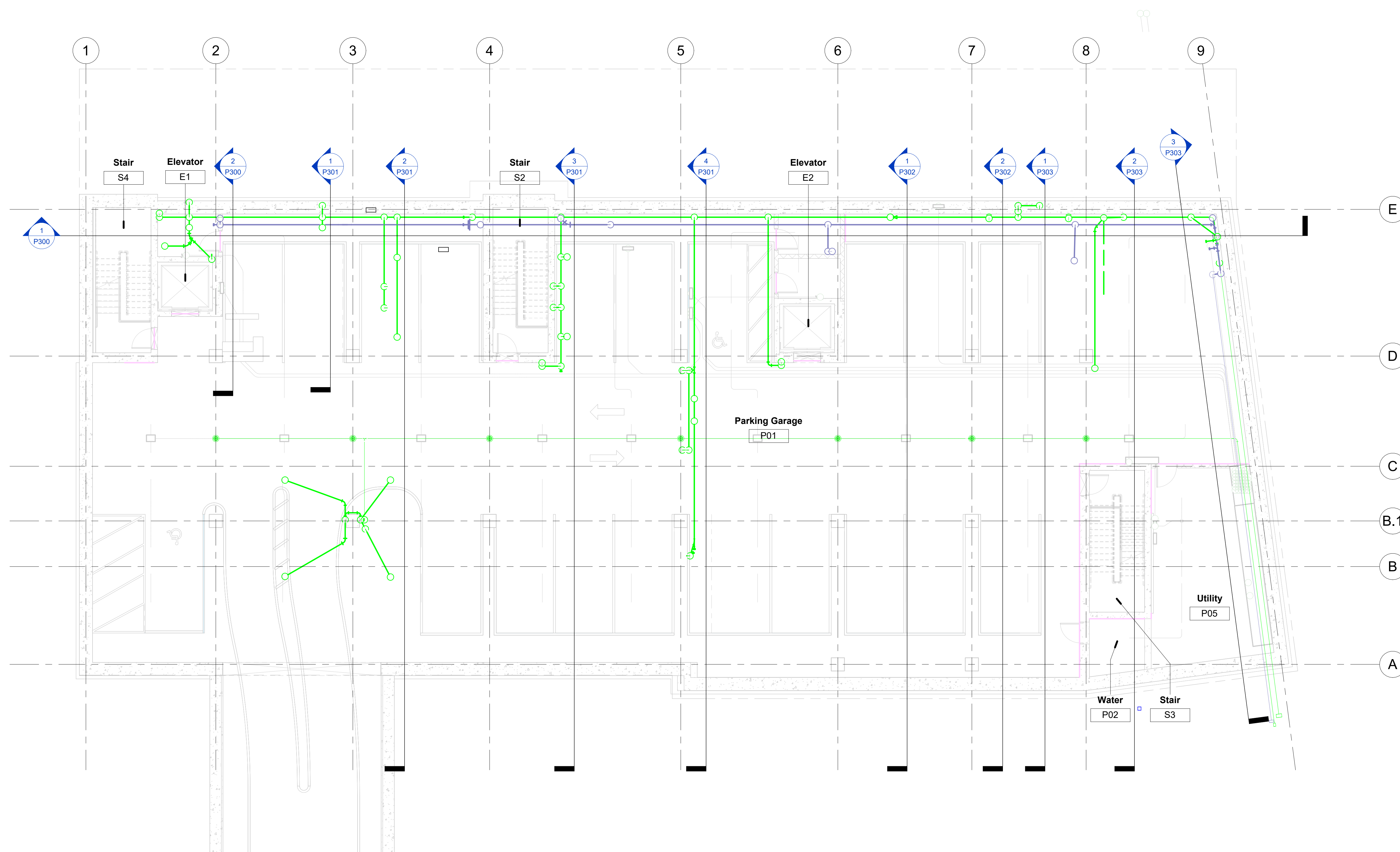
Date	6/1/2023
------	----------

Drawn By	Author
----------	--------

Checked By	Checker
------------	---------

P100

Scale	1/8" = 1'-0"
-------	--------------



① Parking
1/8" = 1'-0"

NOT FOR CONSTRUCTION

2/11/2026 11:16:37 AM



Project Management & Architectural Modeling:

Cartesian Inverse, PA
Chicago, IL 28246

Architectural Design:

Etienne Oiseau, LLC
Detroit, MI 96435

Structural Design and Modeling:

Safe Harbor Engineering, PC
11 Eleventh Street, Suite 11
Purchasing Decisions, NO 13131-1525

MEP Design and Modeling:

Droffats Consulting Services, LLC
Los Angeles, CA 78383

Civil Engineering:

Rubicon Engineering Solutions, INC
Pittsburgh, PA 77462-5247

Landscape Architecture & Community Planning :

Dagny Taggart, LTD
Brownsville, PA 52872

Commercial Kitchen Design:

Designing Trends
103B Broadway
Knoxville, TN 36664-2084

Scale	1/8" = 1'-0"
-------	--------------

NOT FOR CONSTRUCTION

2014/2015 11-12-10 AM



www.autodesk.com/revit

Project Management & Architectural Modeling:

Cartesian Inverse, PA
Chicago, IL 28246

Architectural Design:

Etienne Oiseau, LLC
Detroit, MI 96435

Structural Design and Modeling:

Safe Harbor Engineering, PC
11 Eleventh Street, Suite 11
Purchasing Decisions, NO 13131-1525

MEP Design and Modeling:

Droffats Consulting Services, LLC
Los Angeles, CA 78383

Civil Engineering:

Rubicon Engineering Solutions, INC
Pittsburgh, PA 77462-5247

Landscape Architecture & Community Planning :

Dagny Taggart, LTD
Brownsville, PA 52872

Commercial Kitchen Design:

Designing Trends
103B Broadway
Knoxville, TN 36664-2084

[illegible]

Autodesk

Snowdon Towers
PLAN - L2 SANITARY

Project Number	7765328-33-P
----------------	--------------

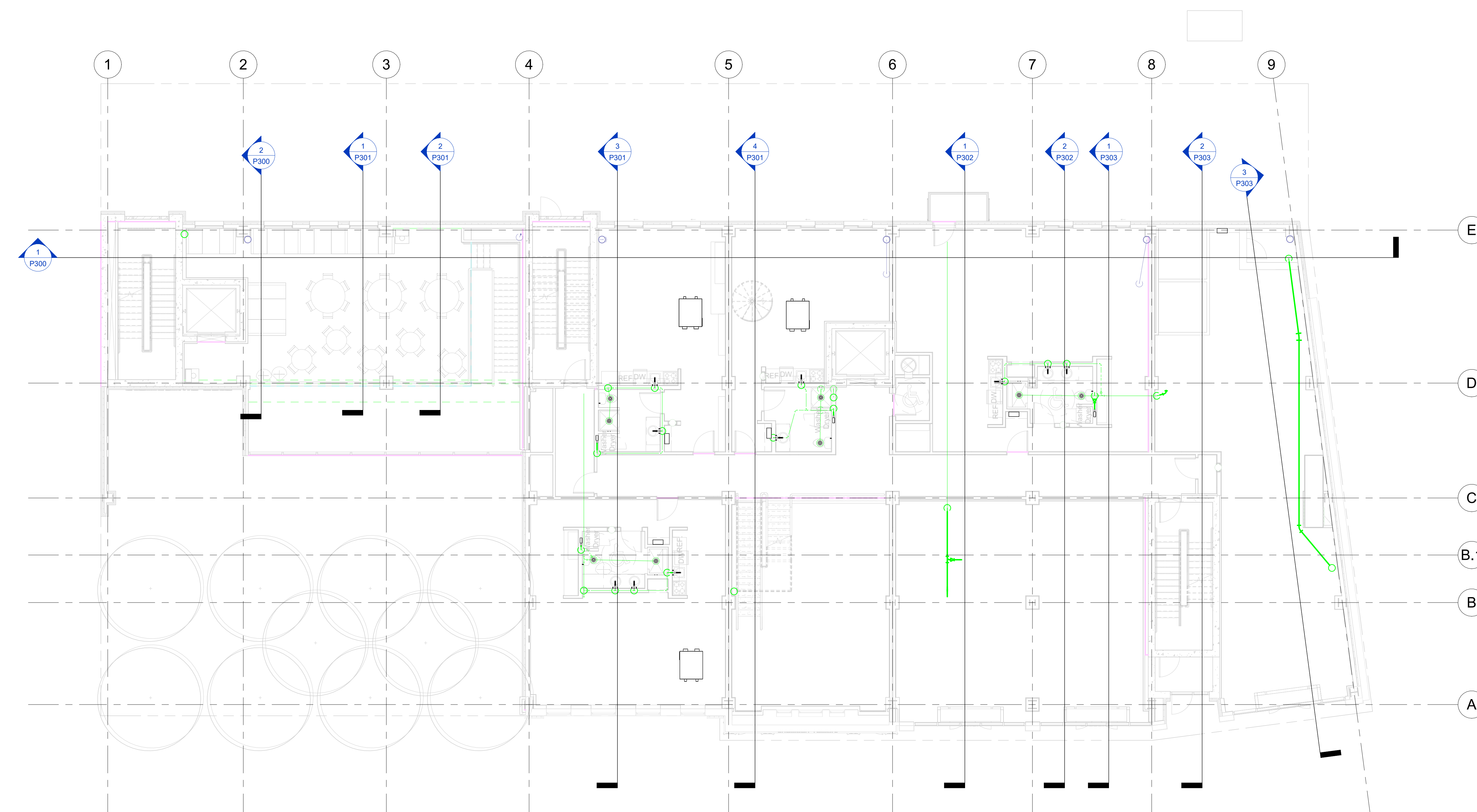
Date	6/1/2023
------	----------

Drawn By	Author
----------	--------

Checked By	Checker
------------	---------

P102

Scale	1/8" = 1'-0"
-------	--------------



① L2
1/8" = 1'-0"

NOT FOR CONSTRUCTION

2/11/2026 11:16:42 AM



www.autodesk.com/revit

Project Management & Architectural Modeling:

Cartesian Inverse, PA
Chicago, IL 28246

Architectural Design:

Etienne Oiseau, LLC
Detroit, MI 96435

Structural Design and Modeling:

Safe Harbor Engineering, PC
11 Eleventh Street, Suite 11
Purchasing Decisions, NO 13131-1525

MEP Design and Modeling:

Droffats Consulting Services, LLC
Los Angeles, CA 78383

Civil Engineering:

Rubicon Engineering Solutions, INC
Pittsburgh, PA 77462-5247

Landscape Architecture & Community Planning :

Dagny Taggart, LTD
Brownsville, PA 52872

Commercial Kitchen Design:

Designing Trends
103B Broadway
Knoxville, TN 36664-2084

[illegible]

Autodesk

Snowdon Towers
PLAN - L3 SANITARY

Project Number	7765328-33-P
----------------	--------------

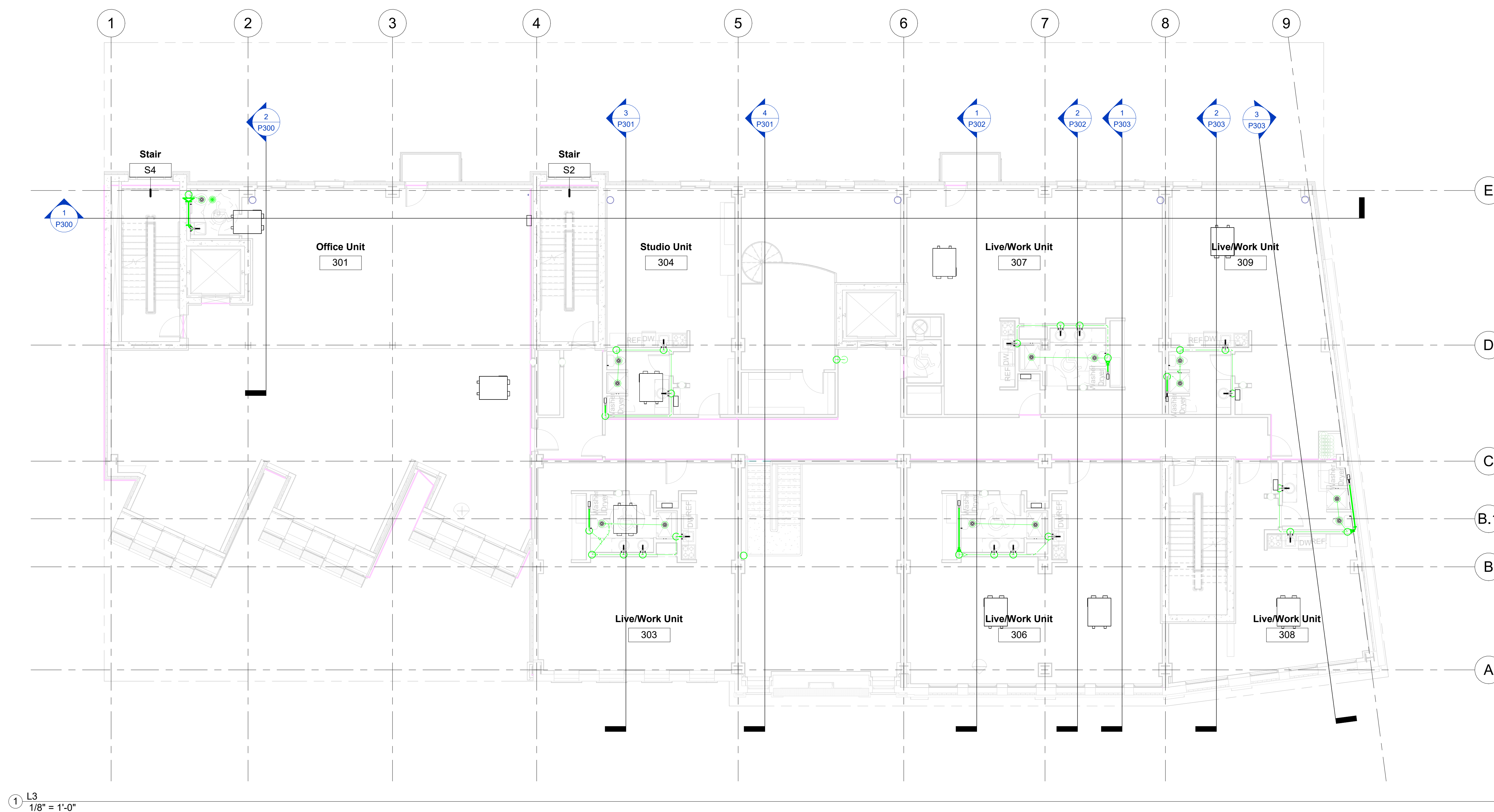
Date	6/1/2023
------	----------

Drawn By	Author
----------	--------

Checked By	Checker
------------	---------

P103

Scale	1/8" = 1'-0"
-------	--------------



① $\frac{L3}{1/8" = 1'-0"$

NOT FOR CONSTRUCTION

2/11/2026 11:16:45 AM



www.autodesk.com/revit

Project Management & Architectural Modeling:

Cartesian Inverse, PA
Chicago, IL 28246

Architectural Design:

Etienne Oiseau, LLC
Detroit, MI 96435

Structural Design and Modeling:

Safe Harbor Engineering, PC
11 Eleventh Street, Suite 11
Purchasing Decisions, NO 13131-1525

MEP Design and Modeling:

Droffats Consulting Services, LLC
Los Angeles, CA 78383

Civil Engineering:

Rubicon Engineering Solutions, INC
Pittsburgh, PA 77462-5247

Landscape Architecture & Community Planning :

Dagny Taggart, LTD
Brownsville, PA 52872

Commercial Kitchen Design:

Designing Trends
103B Broadway
Knoxville, TN 36664-2084

[illegible]

Autodesk

Snowdon Towers
PLAN - L4 SANITARY

Project Number	7765328-33-P
----------------	--------------

Date	6/1/2023
------	----------

Drawn By	Author
----------	--------

Checked By	Checker
------------	---------

P104

Scale	1/8" = 1'-0"
-------	--------------

NOT FOR CONSTRUCTION

2/11/2026 11:16:47 AM



www.autodesk.com/revit

Project Management & Architectural Modeling:

Cartesian Inverse, PA
Chicago, IL 28246

Architectural Design:

Etienne Oiseau, LLC
Detroit, MI 96435

Structural Design and Modeling:

Safe Harbor Engineering, PC
11 Eleventh Street, Suite 11
Purchasing Decisions, NO 13131-1525

MEP Design and Modeling:

Droffats Consulting Services, LLC
Los Angeles, CA 78383

Civil Engineering:

Rubicon Engineering Solutions, INC
Pittsburgh, PA 77462-5247

Landscape Architecture & Community Planning :

Dagny Taggart, LTD
Brownsville, PA 52872

Commercial Kitchen Design:

Designing Trends
103B Broadway
Knoxville, TN 36664-2084

[illegible]

Autodesk

Snowdon Towers
PLAN - L5 SANITARY

Project Number	7765328-33-P
----------------	--------------

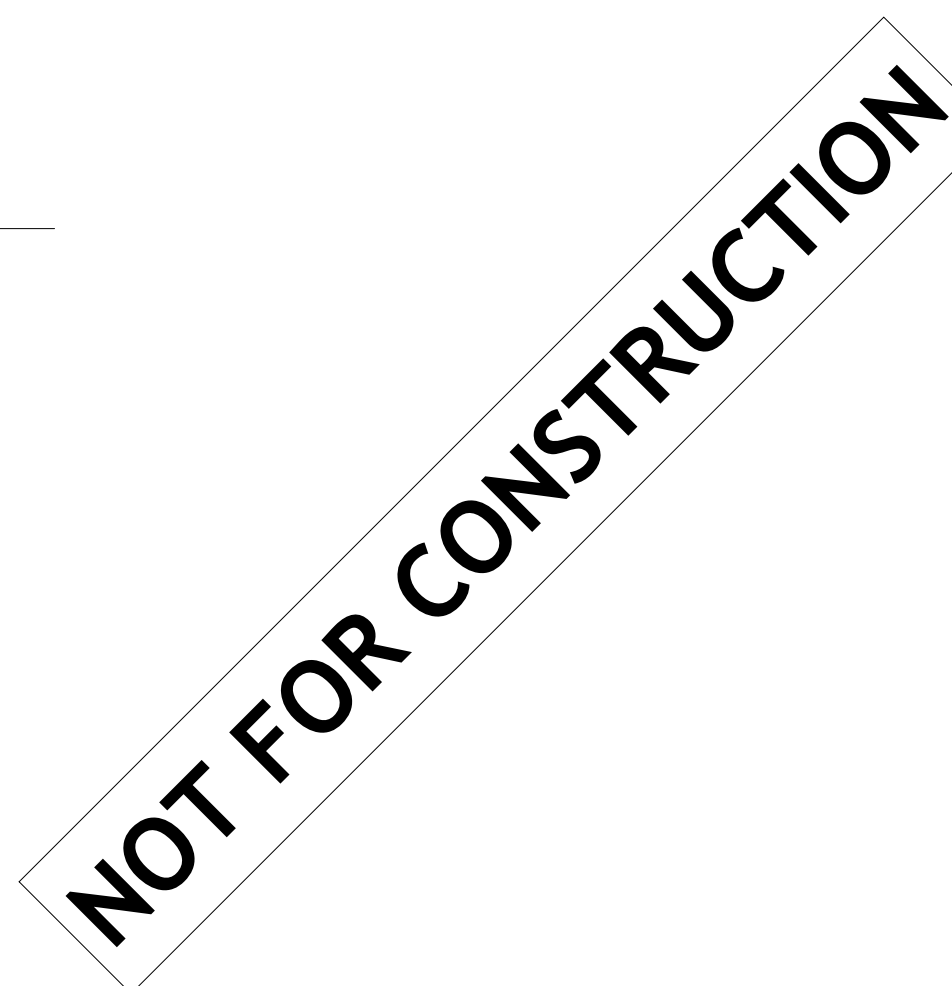
Date	6/1/2023
------	----------

Drawn By	Author
----------	--------

Checked By	Checker
------------	---------

P105

Scale $1/8" = 1'-0"$



2/11/2026 11:16:49 AM



Project Management & Architectural Modeling:

Cartesian Inverse, PA
Chicago, IL 28246

Architectural Design:

Etienne Oiseau, LLC
Detroit, MI 96435

Structural Design and Modeling:

Safe Harbor Engineering, PC
11 Eleventh Street, Suite 11
Purchasing Decisions, NO 13131-1525

MEP Design and Modeling:

Droffats Consulting Services, LLC
Los Angeles, CA 78383

Civil Engineering:

Rubicon Engineering Solutions, INC
Pittsburgh, PA 77462-5247

Landscape Architecture & Community Planning :

Dagny Taggart, LTD
Brownsville, PA 52872

Commercial Kitchen Design:

Designing Trends
103B Broadway
Knoxville, TN 36664-2084

Autodesk

Snowdon Towers

PLAN - ROOF SANITARY

Project Number	7765328-33-P
----------------	--------------

Date	6/1/2023
------	----------

Drawn By	Author
----------	--------

Checked By	Checker
------------	---------

P106

Scale	$1/8" = 1'-0"$
-------	----------------

NOT FOR CONSTRUCTION

2/11/2021 11:47:53 AM



www.autodesk.com/revit

Project Management & Architectural Modeling:

Cartesian Inverse, PA
Chicago, IL 28246

Architectural Design:

Etienne Oiseau, LLC
Detroit, MI 96435

Structural Design and Modeling:

Safe Harbor Engineering, PC
11 Eleventh Street, Suite 11
Purchasing Decisions, NO 13131-1525

MEP Design and Modeling:

Droffats Consulting Services, LLC
Los Angeles, CA 78383

Civil Engineering:

Rubicon Engineering Solutions, INC
Pittsburgh, PA 77462-5247

Landscape Architecture & Community Planning :

Dagny Taggart, LTD
Brownsville, PA 52872

Commercial Kitchen Design:

Designing Trends
103B Broadway
Knoxville, TN 36664-2084

[illegible]

Autodesk

Snowdon Towers
RCP - LO SANITARY

Project Number	7765328-33-P
----------------	--------------

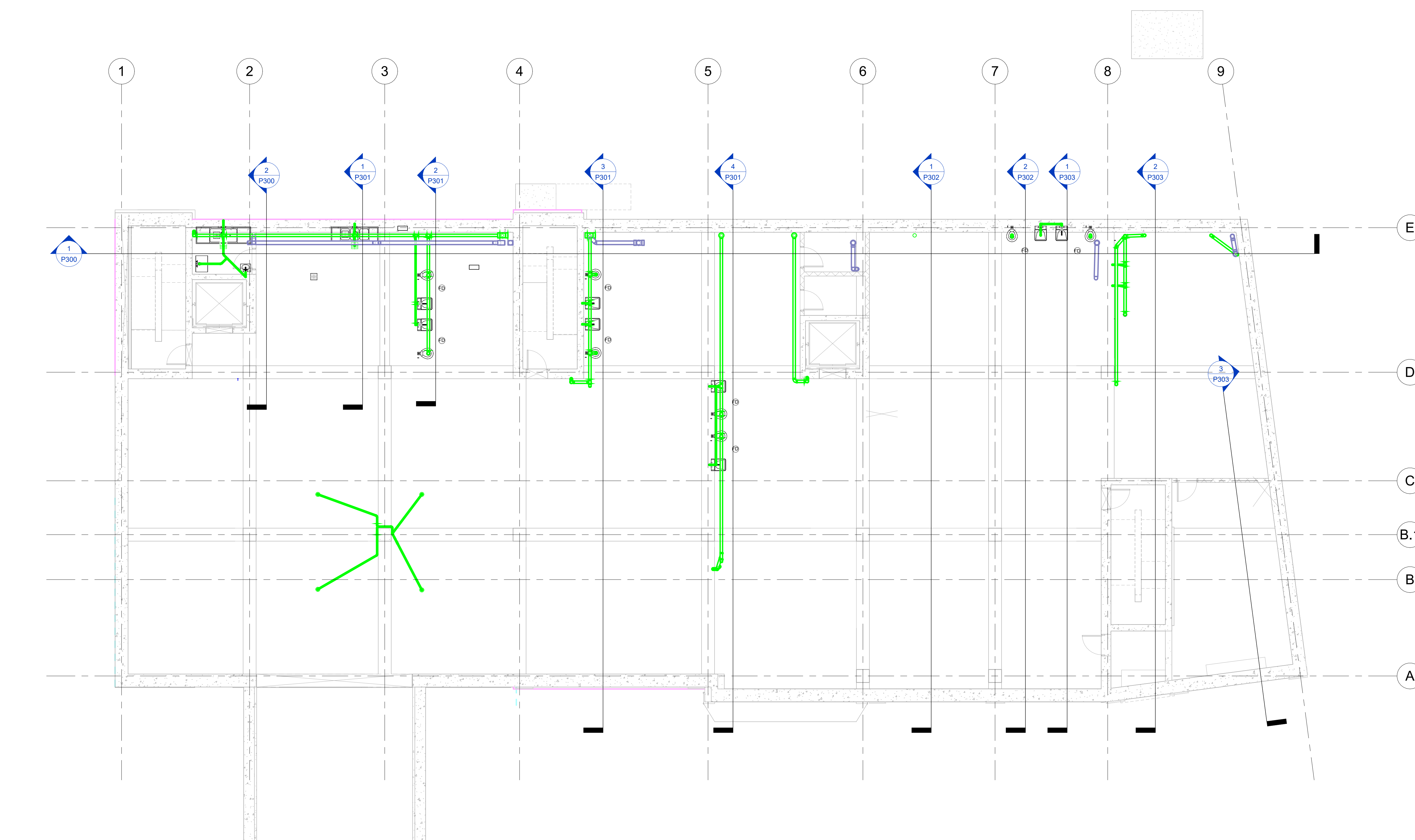
Date	6/1/2023
------	----------

Drawn By	Author
----------	--------

Checked By	Checker
------------	---------

P200

Scale	1/8" = 1'-0"
-------	--------------



① Parking
1/8" = 1'-0"

NOT FOR CONSTRUCTION

2/11/2025 11:46:55 AM



www.autodesk.com/revit

Project Management & Architectural Modeling:

Cartesian Inverse, PA
Chicago, IL 28246

Architectural Design:

Etienne Oiseau, LLC
Detroit, MI 96435

Structural Design and Modeling:

Safe Harbor Engineering, PC
11 Eleventh Street, Suite 11
Purchasing Decisions, NO 13131-1525

MEP Design and Modeling:

Droffats Consulting Services, LLC
Los Angeles, CA 78383

Civil Engineering:

Rubicon Engineering Solutions, INC
Pittsburgh, PA 77462-5247

Landscape Architecture & Community Planning :

Dagny Taggart, LTD
Brownsville, PA 52872

Commercial Kitchen Design:

Designing Trends
103B Broadway
Knoxville, TN 36664-2084

[illegible]

Autodesk

Snowdon Towers

RCP - L1 SANITARY

Project Number	7765328-33-
----------------	-------------

Date	6/1/202
------	---------

Drawn By	Author
----------	--------

Checked By	Checked
------------	---------

P201

Scale	1/8" = 1'-0"
-------	--------------

NOT FOR CONSTRUCTION

2/11/2026 11:16:58 AM



Project Management & Architectural Modeling:

Cartesian Inverse, PA
Chicago, IL 28246

Architectural Design:

Etienne Oiseau, LLC
Detroit, MI 96435

Structural Design and Modeling:

Safe Harbor Engineering, PC
11 Eleventh Street, Suite 11
Purchasing Decisions, NO 13131-1525

MEP Design and Modeling:

Droffats Consulting Services, LLC
Los Angeles, CA 78383

Civil Engineering:

Rubicon Engineering Solutions, INC
Pittsburgh, PA 77462-5247

Landscape Architecture & Community Planning :

Dagny Taggart, LTD
Brownsville, PA 52872

Commercial Kitchen Design:

Designing Trends
103B Broadway
Knoxville, TN 36664-2084

Project Number	7765328-33-P
----------------	--------------

6/1/2023

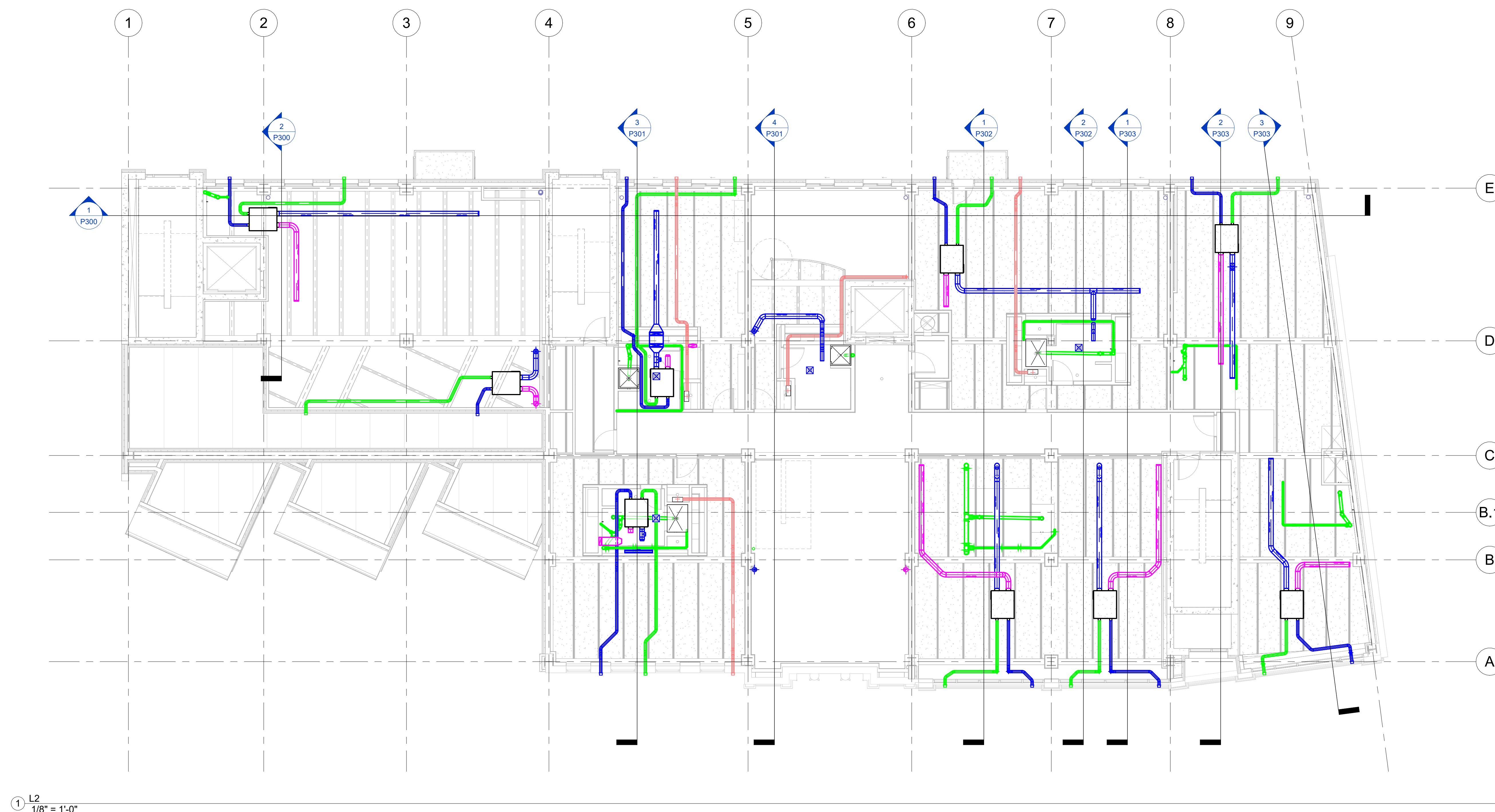
Drawn By	Author
----------	--------

Checked By	Checker
------------	---------

P202

Scale	1/8" = 1'-0"
-------	--------------

2014/2027 11-17-01 AM





Project Management & Architectural Modeling:

Cartesian Inverse, PA
Chicago, IL 28246

Architectural Design:

Etienne Oiseau, LLC
Detroit, MI 48202

Structural Design and Modeling:

Safe Harbor Engineering, PC
11 Eleventh Street, Suite 11
Purchasing Decisions, NO 13131-1525

MEP Design and Modeling:

Droffats Consulting Services, LLC
Los Angeles, CA 78383

Civil Engineering:

Rubicon Engineering Solutions, INC
Pittsburgh, PA 77462-5247

Landscape Architecture & Community Planning :

Dagny Taggart, LTD
Brownsville, PA 52872

Commercial Kitchen Design:

Designing Trends
103B Broadway
Knoxville, TN 36664-2084

Project Number	7765328-33-P
----------------	--------------

Date	6/1/2023
------	----------

Drawn By	Author
----------	--------

Checked By	Checker
------------	---------

P203

Scale	1/8" = 1'-0"
-------	--------------

NOT FOR CONSTRUCTION

2014/03/07 11:17:01 AM



Project Management & Architectural Modeling:

Cartesian Inverse, PA
Chicago, IL 28246

Architectural Design:

Etienne Oiseau, LLC
Detroit, MI 48202

Structural Design and Modeling:

Safe Harbor Engineering, PC
11 Eleventh Street, Suite 11
Purchasing Decisions, NO 13131-1525

MEP Design and Modeling:

Droffats Consulting Services, LLC
Los Angeles, CA 78383

Civil Engineering:

Rubicon Engineering Solutions, INC
Pittsburgh, PA 77462-5247

Landscape Architecture & Community Planning :

Dagny Taggart, LTD
Brownsville, PA 52872

Commercial Kitchen Design:

Designing Trends
103B Broadway
Knoxville, TN 36664-2084

Scale	1/8" = 1'-0"
-------	--------------

NOT FOR CONSTRUCTION

2014/03/17 11:17:40 AM



Project Management & Architectural Modeling:

Cartesian Inverse, PA
Chicago, IL 28246

Architectural Design:

Etienne Oiseau, LLC
Detroit, MI 96435

Structural Design and Modeling:

Safe Harbor Engineering, PC
11 Eleventh Street, Suite 11
Purchasing Decisions, NO 13131-1525

MEP Design and Modeling:

Droffats Consulting Services, LLC
Los Angeles, CA 78383

Civil Engineering:

Rubicon Engineering Solutions, INC
Pittsburgh, PA 77462-5247

Landscape Architecture & Community Planning :

Dagny Taggart, LTD
Brownsville, PA 52872

Commercial Kitchen Design:

Designing Trends
103B Broadway
Knoxville, TN 36664-2084

Project Number	7765328-33-P
----------------	--------------

Date	6/1/2023
------	----------

Drawn By	Author
----------	--------

Checked By	Checker
------------	---------

P205

Scale	1/8" = 1'-0"
-------	--------------

NOT FOR CONSTRUCTION

2011/03/14 14:43:11



Cartesian Inverse, PA
Chicago, IL 28246

Etienne Oiseau, LLC
Detroit, MI 96435

Safe Harbor Engineering, PC
11 Eleventh Street, Suite 11
Purchasing Decisions, NO 13131-1525

Droffats Consulting Services, LLC
Los Angeles, CA 78383

Rubicon Engineering Solutions, INC
Pittsburgh, PA 77462-5247

Dagny Taggart, LTD
Brownsville, PA 52872

Designing Trends
103B Broadway
Knoxville, TN 36664-2084

Scale	1/8" = 1'-0"
-------	--------------

NOT FOR CONSTRUCTION

2011/2002/ 11-17-11



www.autodesk.com/revit

Project Management & Architectural Modeling:

Cartesian Inverse, PA
Chicago, IL 28246

Architectural Design:

Etienne Oiseau, LLC
Detroit, MI 96435

Structural Design and Modeling:

Safe Harbor Engineering, PC
11 Eleventh Street, Suite 11
Purchasing Decisions, NO 13131-1525

MEP Design and Modeling:

Droffats Consulting Services, LLC
Los Angeles, CA 78383

Civil Engineering:

Rubicon Engineering Solutions, INC
Pittsburgh, PA 77462-5247

Landscape Architecture & Community Planning :

Dagny Taggart, LTD
Brownsville, PA 52872

Commercial Kitchen Design:

Designing Trends
103B Broadway
Knoxville, TN 36664-2084

[illegible]

Autodesk

Snowdon Towers
SECTIONS SANITARY RISERS

Project Number	7765328-33-P
----------------	--------------

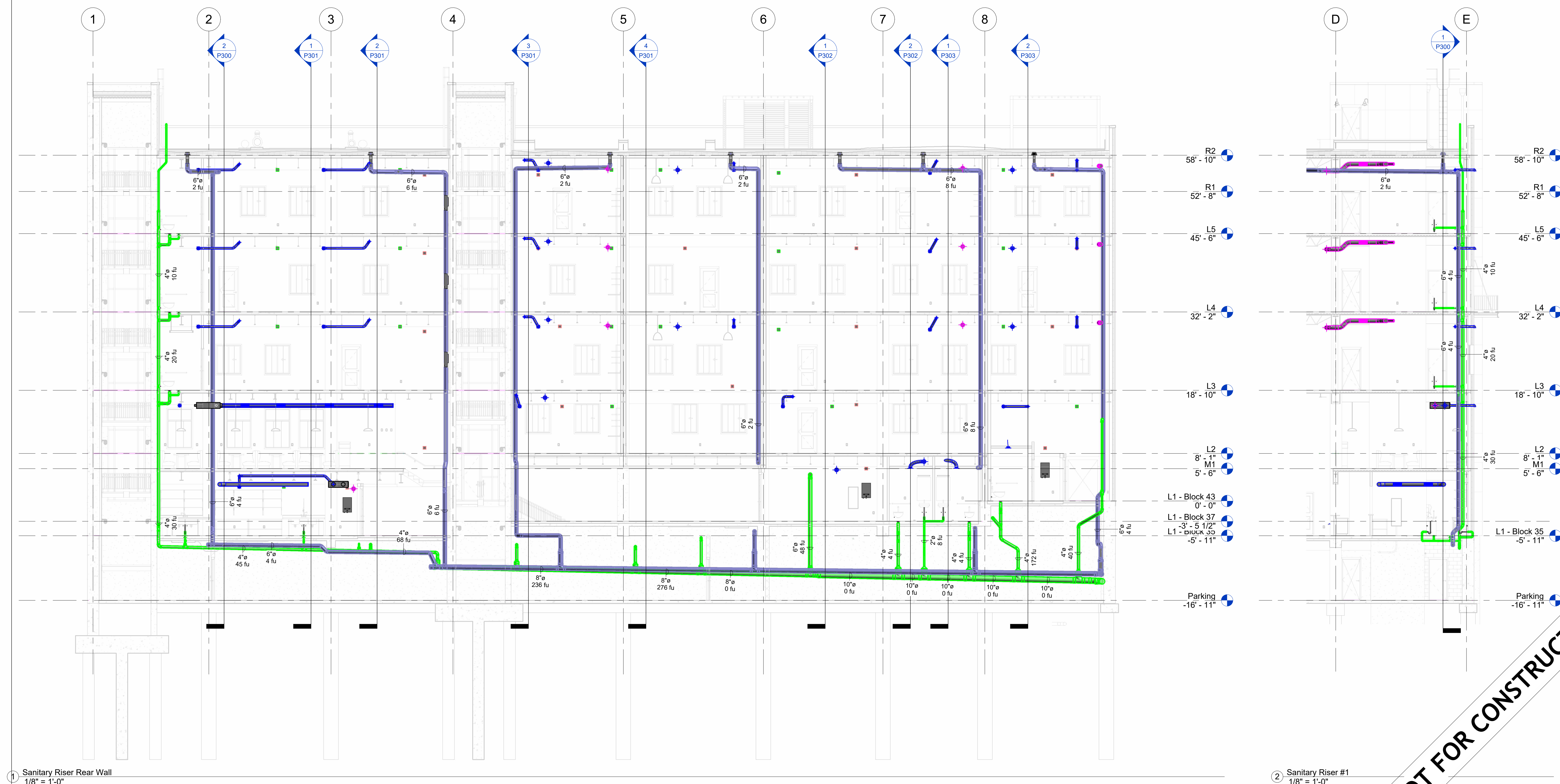
Date	6/1/2023
------	----------

Drawn By	Author
----------	--------

Checked By	Checker
------------	---------

P300

Scale	1/8" = 1'-0"
-------	--------------



1 Sanitary Riser Rear Wall
1/8" = 1'-0"

② Sanitary Riser #1
1/8" = 1'-0"

Diagram illustrating a parking space configuration. The space is labeled "Parking -16' - 11'". A diagonal line across the space indicates it is "NOT FOR CONSTRUCTION".



Cartesian Inverse, PA
Chicago, IL 28246

Etienne Oiseau, LLC
Detroit, MI 96435

Safe Harbor Engineering, PC
11 Eleventh Street, Suite 11
Purchasing Decisions, NO 13131-1525

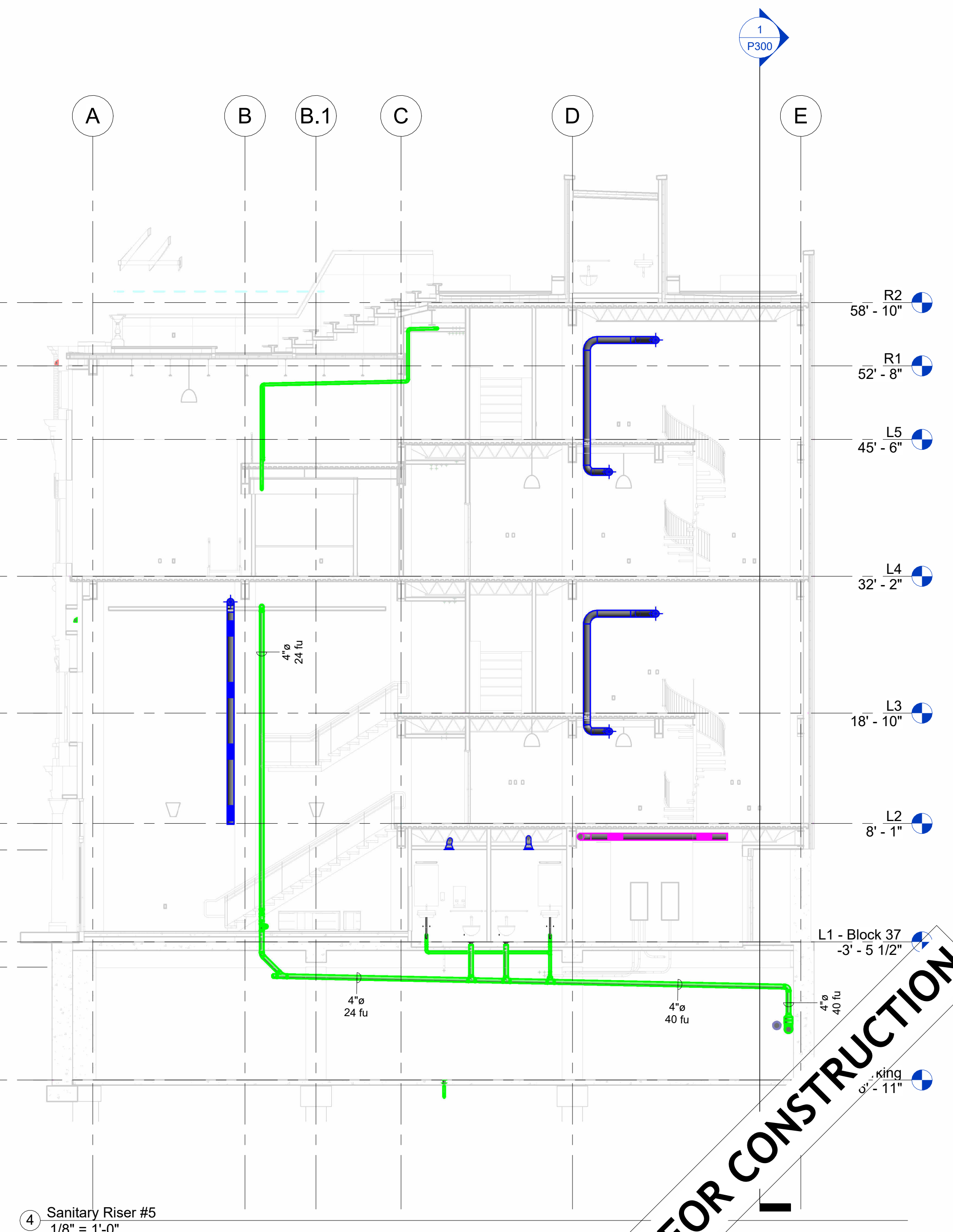
Droffats Consulting Services, LLC
Los Angeles, CA 78383

Rubicon Engineering Solutions, INC
Pittsburgh, PA 77462-5247

Dagny Taggart, LTD
Brownsville, PA 52872

Designing Trends
103B Broadway
Knoxville, TN 36664-2084

Autodesk	
Snowdon Towers	
SECTIONS SANITARY RISERS	
Project Number	7765328-33-P
Date	6/1/2023
Drawn By	Author
Checked By	Checker
P301	
Scale	1/8" = 1'-0"





www.autodesk.com/revit

Project Management & Architectural Modeling:

Cartesian Inverse, PA
Chicago, IL 28246

Architectural Design:

Etienne Oiseau, LLC
Detroit, MI 96435

Structural Design and Modeling:

Safe Harbor Engineering, PC
11 Eleventh Street, Suite 11
Purchasing Decisions, NO 13131-1525

MEP Design and Modeling:

Droffats Consulting Services, LLC
Los Angeles, CA 78383

Civil Engineering:

Rubicon Engineering Solutions, INC
Pittsburgh, PA 77462-5247

Landscape Architecture & Community Planning :

Dagny Taggart, LTD
Brownsville, PA 52872

Commercial Kitchen Design:

Designing Trends
103B Broadway
Knoxville, TN 36664-2084

[illegible]

Autodesk

Snowdon Towers
SECTIONS SANITARY RISERS

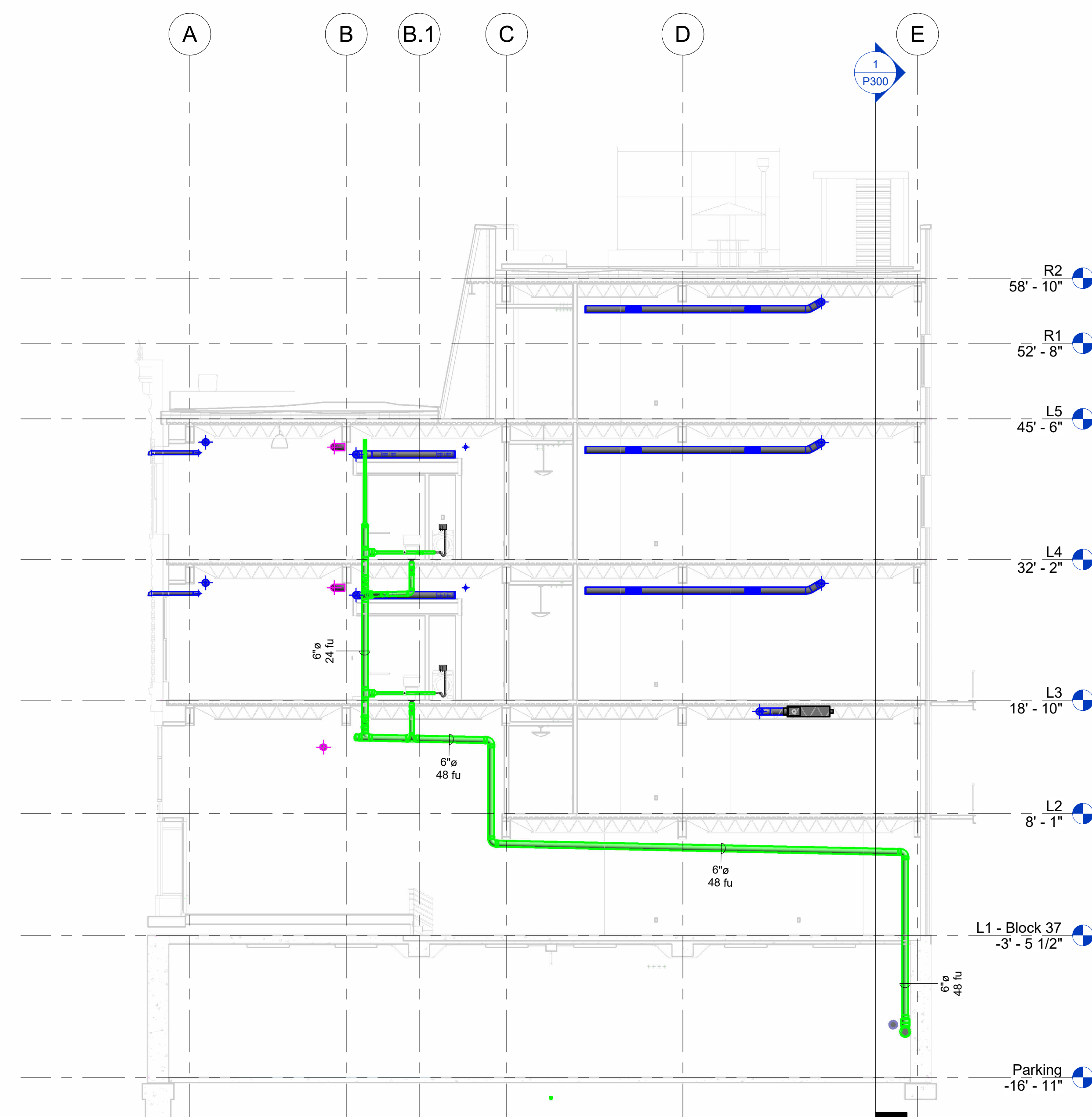
Project Number	7765328-33-P
----------------	--------------

Date	6/1/2023
------	----------

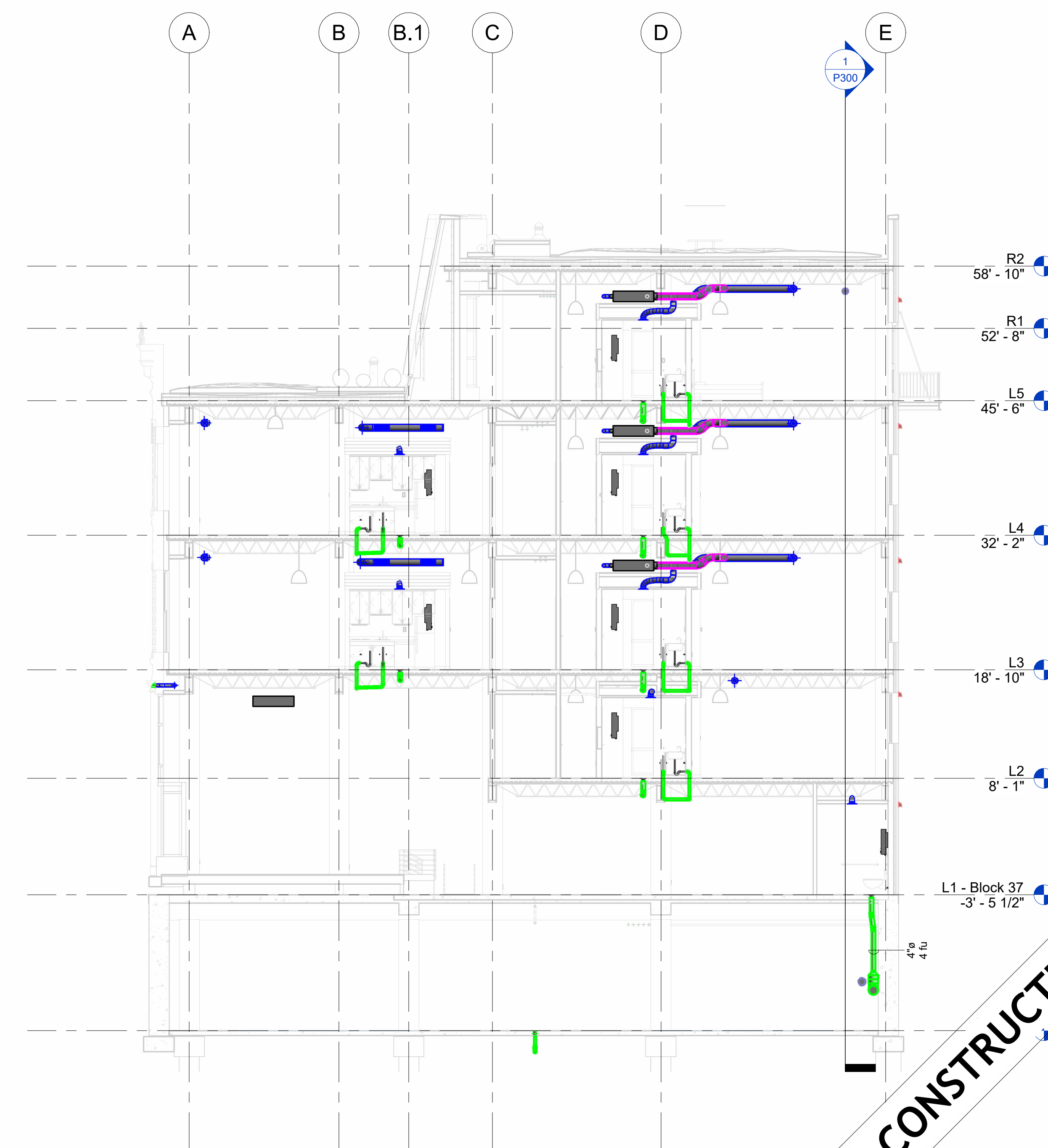
Drawn By	Author
----------	--------

P302

Scale	1/8" = 1'-0"
-------	--------------



① Sanitary Riser #6
1/8" = 1'-0"



② Sanitary Riser #7
1/8" = 1'-0"

NOT FOR CONSTRUCTION



Cartesian Inverse, PA
Chicago, IL 28246

Etienne Oiseau, LLC
Detroit, MI 96435

Safe Harbor Engineering, PC
11 Eleventh Street, Suite 11
Purchasing Decisions, NO 13131-1525

Droffats Consulting Services, LLC
Los Angeles, CA 78383

Rubicon Engineering Solutions, INC
Pittsburgh, PA 77462-5247

Dagny Taggart, LTD
Brownsville, PA 52872

Designing Trends
103B Broadway
Knoxville, TN 36664-2084

Scale	$1/8" = 1'-0"$
-------	----------------

2/11/2026 11:18:11 AM

